



Registration
date

- December 24th, 2013

Registration
Number and
ACT

- DO/SW/JO/VA/61 (The voluntary social welfare agencies (Registration and Control) ordinance 1961)

NTN
Number

- 4247737-9

Contact
Person

- Mrs. Najma Nawaz - Chief executive Officer
- Cell# +923053437800
- Email# wydojam@gmail.com
- Head office Address : Bungalow 174, Phase/2 Almadad Colony behind N3 petrol Pump city Jamshoro –Sindh Pakistan

Website &
Social
Media

- <https://wydo.org.pk/>
- <https://www.facebook.com/wydojamshoro.org>
- <https://twitter.com/WYDO6>
- <https://web.facebook.com/Woman-enterprise-216311025528528>

Bank
Account
Details

- Title of Account : WOMEN AND YOUTHS DEVELOPMENT ORGANIZATION
- Account Number : 0431-162150-1000
- Bank Name : Sindh Bank Limited (Jamshoro Branch)
- IBAN number : PK66SIND0004311621501000
- SWIFT Code : SINDPKKA

ABOUT US

Women and Youth's Development Organization is non-profitable organization based in Sindh province with its head office at Jamshoro Sindh. It commenced its operations informally in 2011 as a community initiative geared towards addressing social ills that bedevil the society, especially the marginalization of the women, girls and children living with poverty.

The Organization was formerly registered under the Voluntary Social Welfare Agencies Ordinance 1961, as a non-governmental organization in December 24th, 2013. Over the years, it has experienced an exponential growth in service delivery capacity and effectiveness, with various successful projects geared towards **women and Youths empowerment, water sanitation and hygiene, education and child protection, food security nutrition and livelihood and good governance** the spread and impact of poverty & illiteracy problems among the Poorest and Marginalized grassroots communities. WYDO is a hub for grassroots empowerment and community based development Initiatives.

The interventions of WYDO serve the grassroots communities regardless of creed, nationality, ethnicity, race, political beliefs and gender or social status. The organization strictly follows the principles of solidarity, dignity, transparency and most importantly serving the marginalized in a very effective and efficient way. The WYDO aims to bring together the local community with their issues.

VISION

**Women, Youths and children has rights, resources and opportunities
to shape their own lives and define their communities**

MISSION

WYDO strengthens Women voice and builds dynamic leadership and provides essential and meaningful services that promote safe, inclusive and equitable communities

GOAL

To help and develop the distressed, needy, neglected and vulnerable people socially and Economically and politically by providing them necessary assistance for sustaining their lives and conditions specially women, girls and children as well

Specific Objectives



MDG 1: ERADICATE EXTREME POVERTY AND HUNGER



MDG 2: ACHIEVE UNIVERSAL PRIMARY EDUCATION



MDG 3: PROMOTE GENDER EQUALITY AND EMPOWER WOMEN



MDG 6: CLEAN WATER AND SANITATION

Organizational Values

Integrity | Inclusiveness | Professionalism | Personal Excellence

Sartorial Areas of Intervention and Priority Programs

Women and Youths empowerment | water sanitation and hygiene | education and child protection

Food security nutrition and livelihood and |good governance

Organizational Structure

WYDO has four tiered structure i.e. Development experts at the leadership and governance level, Sector Specialists at the management and execution level, qualified and experience staff at the implementation level, and community groups/activists/volunteers at grassroots level. Board of Directors (Body) make policies and supervise the implementation of these policies. Executive Director is the Head of the organization and executes policies of the organization through sector specialists and their teams while Project Managers/Coordinators are working at field level to implement the projects as per the project design. Community Groups and volunteers support the project interventions in their respective areas.

GOVERNANCE

WYDO has an independent and involved Board of Directors (BoD). It's the highest forum that provides the overall strategic guidance to the organization. The ToR's of BoD and its constituent bodies are well-defined and documented. It also approves the long and midterm Strategic Action Plans (3-5 years) of the organization to set an overall goal for the organization.

- General Body
- Board of Directors
- Executive Committee

Furthermore, WYDO has access for all skilled and experienced professionals who have capacity and competency to promote the Goal and Objectives of the organization. Staff Officers/members (both at Head & Field Offices) are responsible for the day-to-day functioning, and implementing of programs and projects. They report to the Program/Operations Director, who overall is responsible for the organization's activities. Staff members of WYDO fall into three main groups - responsible for activities related to

(1) Finance & Administration (including Procurement)

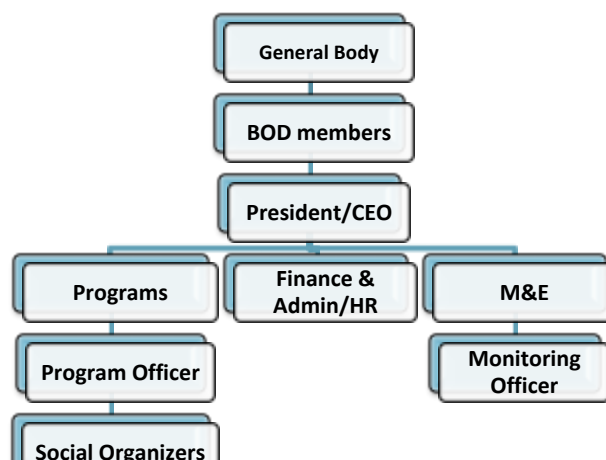
(2) Programs/Projects plus monitoring

(3) Human Resource.

Following are the key reporting lines of the organization;

- Executive Director Reports to the Boards of Directors
- Program /Operation Director Reports to the Executive Director
- Department Heads/Officers (Program, HR, Finance, Admin, Procurement Officers Etc.) Report to
- Program/Operations Director 3 All other staff members (Program, HR, Finance, Admin
- & Procurement Assistants) are responsible to assist & report their respective supervisors/head of the departments
- All Field Officers report to Program Manager/Office
- All Staff members of field offices (Program, HR, Finance
- & Admin Assistants) assist & report their respective field officer

Organgram





Mrs. NAJMA NAWAZ- PRESIDENT



Ms. MEHWISH - VICE.PRESIDENT



MS. SAMINA - GENERAL.SECRETARY



MS. MEHWISH - JOINT.SECRETARY



MS. MARYAM - TREASURER

PARTNERS



NETWORKS



